



PRECISION.  
**THAT'S WHAT IT'S  
ALL ABOUT.**

## OUT OF ROSENFELD

Precision parts from HÖHN are in demand across the globe, and for good reason: Sophisticated solutions, customized and absolutely reliable in terms of quality and delivery reliability - that's what we are known for. For this, a high-efficient distribution network across the globe is required.

Our headquarters in Rosenfeld in southern Germany is the home of our quality and the basis of our success. Rooted in the region and successful worldwide: This is not an inherent contradiction but a living reality or simply daily business.



Established in  
**1973**

Employees  
**170**

Surface of  
**11,600 m<sup>2</sup>**

# INTRODUCING **HÖHN**

Dear reader,

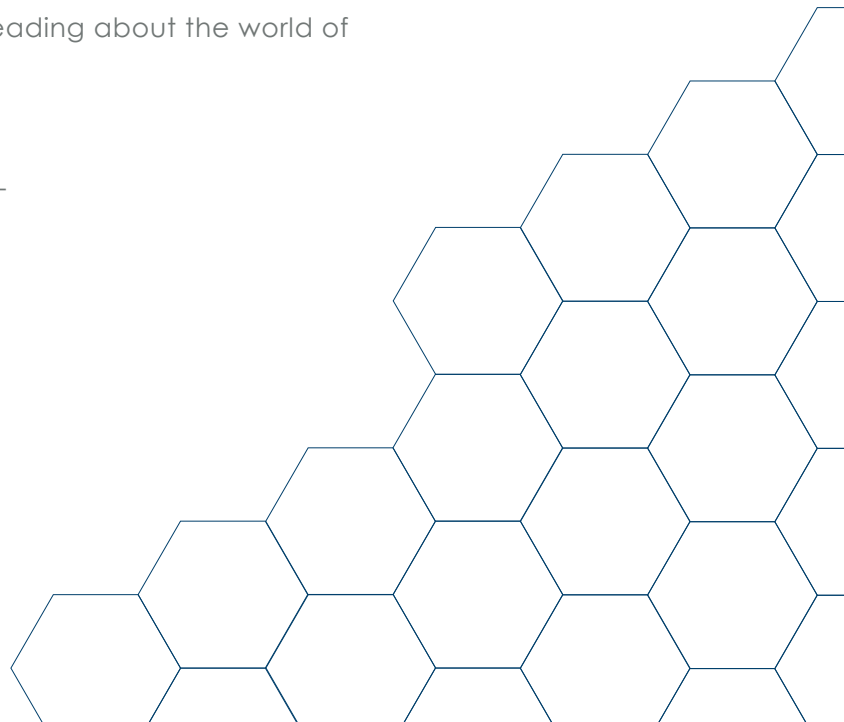
People often beat about the bush until they finally get to the point. You probably don't like that any more than I do, so let's get straight to the topic that drives us here at HÖHN every day: sophisticated precision parts.

This is what makes us special, what we are particularly good at and what has made us a globally successful SME. However, our success has not fallen out of the sky, but is based on the stable foundation of the values of a family business: These include honesty and trust, team spirit, curiosity, openness and reliability. You could say that we act according to a very stable compass – yesterday, today and in the future.

The satisfaction of our customers is always our top priority, and this is the standard we are ready to measure up to. The fact that they've been serving us this well for over 50 years shows that our compass can't be all that wrong.

We hope you enjoy reading about the world of precision parts.

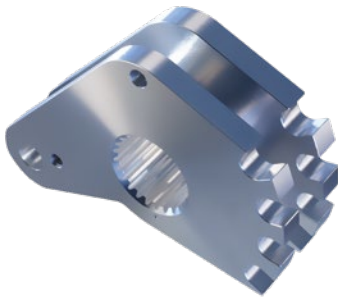
Reiner Höhn  
– Managing Director –



## OUR SERVICE. **PERFECT ALL AROUND.**

Does the name HÖHN make you think of a full range of sophisticated precision parts? If so, you're quite right. There is a good reason why we have had an excellent reputation in the industry for decades. In addition to our range of **production methods**, it is primarily the **upstream and downstream process chain** that makes us not only a high-performance manufacturer for our customers, but most importantly a reliable partner.

Think together – think ahead. You can count on us here. Always at the centre of our business are the **individual needs** of our customers. They all trust HÖHN's expertise and experience, the associated infrastructure and the efficient processes. The result isn't just **added value from metal**, it's first and foremost **trust and partnerships** which are at least as sturdy as our parts.

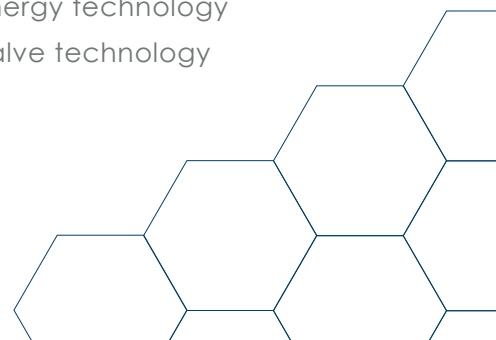


## PRECISION PARTS. **TAILORED TO YOUR NEEDS.**

Customized, tailored design for the specific requirements of our customers and their needs: **Precision parts from HÖHN** can be used in a wide variety of **different industries and applications**. **From small to large series**,

we see ourselves as a company who makes things possible and understands our customers. There's good reason why we've been a solid supplier base for many of our customers for years.

- Filling and packaging technology
- Track and rail technology
- Conveyor technology
- Hydraulics and fluid technology
- Lorries and utility vehicles
- Food processing
- Logistics and transportation
- Aviation and aerospace
- Machine and system construction
- Motor sports and racing
- Pharmaceutical and chemical industry
- Pump industry
- Environment and energy technology
- Valve technology





**“A wide variety of projects, exciting requirements and constantly new solutions – that’s what makes the daily work at HÖHN so special. For me, the best recipe for optimum results is team spirit and the fact that you can always rely on each other.”**



**HÖHN** MAKES THINGS HAPPEN.

“It is no exaggeration to say that we at HÖHN make pretty much everything possible in the field of precision parts.”



## OUR STRENGTHS? **WHERE SHALL WE BEGIN?**

Precision parts from HÖHN are used in demanding applications and industries across the globe: turned parts, milled parts, ground parts and more – customized and in top quality. Our customers rely on an end-to-end range of services: From the selection of suitable materials to design, the corresponding tools and production technologies, finishing and other downstream processes through to a tailor-made logistics concept.

Our motto: Nothing is so good that it cannot be improved upon. That's why we at HÖHN place great importance on technical consulting – person to person. We already contribute our expertise in the run-up to a project, both for feasibility and tolerance design.

Our team of over 170 trained specialists, in conjunction with a high-performance machine and system park, enable even highly complex requirements to become a reality. The result of this versatility is a maximum of options for our customers.

Are you looking for a capable and reliable manufacturer of precision parts? You're in the right place.



# TURNTD PARTS FROM HÖHN. THE SOLUTION FOR YOUR APPLICATION.

Using state-of-the-art lathes and **turning / milling centres** and a team of trained specialists, we at HÖHN produce sophisticated turned parts. Perfectly aligned with your specific needs, manufactured with high-precision according to the latest **production standards**, delivered on time and reliable, precisely where you need our turned parts.

The range of turned parts from HÖHN extends from drive shafts, securing pins and locking pins to valve housings and much more. Whatever you need, we'll make it possible – from **individual parts** to **series production**.

Short & precise – we manufacture turned parts with the following **dimensions**:

- From the bar, Ø 12–80 mm
- Chuck part Ø up to 400 mm

Precision parts from HÖHN: **from professionals for professionals.**







## TURNING WITH HÖHN? **PRECISELY.**

Turning is one of the main core areas of expertise at HÖHN. For decades, we've been a strong and reliable partner to countless customers. Turned parts from HÖHN can be found in applications across the globe.

Our range of services in the area of turning include high-performance **machines and systems** such as **turn-mill machining centres, sliding headstock automatic lathes** and **30 CNC lathes** with which we're equipped for an extremely broad range of tasks – from small to large serial production. This is supplemented with our **extensive production expertise** and a highly trained team of employees who make the requirements of our customers their personal task. The machining of highly complex parts from **difficult and extremely difficult-to-cut materials** is one of our special areas of expertise.

### **FORK**



Titanium Ti6Al4V - 3.7164



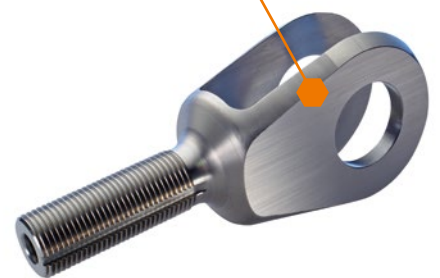
Ø 100 mm x 200 mm



Sawing, turning, 5-axis milling,  
drilling, thread rolling



Aviation and aerospace





## MILLING WITH HÖHN? TO MAKE IT PERFECT.

Over the past decades, we have also made an excellent name for ourselves in milling with customers and industries all over the world: The production of sophisticated **3-/4-/5-axis milled parts from almost all machinable materials** is one of HÖHN's core competencies.

Our customers trust that we always have an answer, even for highly complex requirements and that precision and efficiency are not a

contradiction in terms. With our **partially and fully automated production**, we cover a wide range of production from individual parts to series production. With high-performance systems and in-depth expertise as well as many years of experience in milling a wide **variety of parts and geometries**, we are ideally equipped for every task.

# MILLED PARTS MADE BY HÖHN.

## THE SOLUTION FOR YOUR APPLICATION.

For 50 years, the name HÖHN has been well known for the production of **precision milled parts**. The **smallest possible tolerances** and **first-class dimensional accuracy** combined with maximum flexibility and reliability – that's what we stand for.

On our high-performance systems, we manufacture milled parts from small to large series. Our range of solutions is diversified and tailored to the customer's requirements,

ranging from switch, dosing unit or controller housings to control and valve blocks to a wide variety of levers, cams and much more.

Short & precise – our performance range:

- 5-axis milling up to 400 x 400 x 300 mm
- 3- and 4-axis milling up to 800 x 800 x 300 mm

Milled parts from HÖHN:  
**from professionals for professionals.**

### ROTOR HUB



1.4404



Ø 180 mm x 150 mm



Sawing, turning, 5-axis milling,  
broaching, deburring



Mixing systems for the chemical, pharmaceutical,  
food, paints and varnish sectors, etc.



## GRINDING WITH HÖHN? BRILLIANT IDEA!

It takes experience and expertise to get precision parts running smoothly, and our ground parts are no exception.

Using sophisticated processing methods (feed-through grinding, centreless grinding and grinding between centres), we combine **top surface quality** with **precision** down to the smallest  $\mu$ -ranges. Gleaming? Certainly! Automated? With pleasure!

Ground parts from the HÖHN company always make a gleaming impression. Just like our associated machine park and our team of trained specialists. Exactly as you've come to expect from us.

Ground parts from HÖHN:  
precision parts, perfectly refined.



HÖHN  
PRÄZISIONSTEILE

# GROUND PARTS FROM HÖHN.

## THE SOLUTION FOR YOUR APPLICATION.

The special production competencies of HÖHN in the field of ground parts include centreless feed-through and plunge grinding, as well as flat grinding, internal and external cylindrical grinding. With a powerful system park and optimally trained team, we offer the full spectrum of grinding processes. Automated processes have become standard here.

Short & precise – our performance range:

- Centreless feed-through grinding from  $\varnothing 6.5 - 90$  mm, lengths up to 1,500 mm
- Centreless plunge-cut grinding from  $\varnothing 8 - 90$  mm
- Grinding between centres up to lengths of 1,000 mm
- Possible up to IT4

Ground parts from HÖHN:  
**precision parts, perfectly refined.**

### SHAFT



X6CrNiMoTi17-12-2 - 1.4571



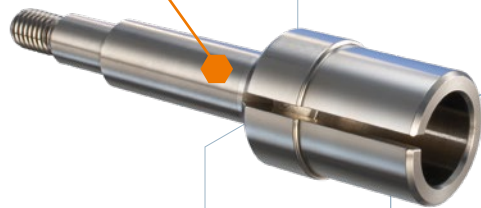
$\varnothing 40$  mm x 200 mm



Sawing, turning, milling,  
thread rolling, grinding



Drive technology



# LASER-WELDED PARTS FROM HÖHN. THE SOLUTION FOR YOUR APPLICATION.

Energy perfectly summed up: Laser-welded parts from the HÖHN company meet the highest **quality standards** and leave no questions unanswered when it comes to **flexibility**. The fact that our customers rely on an **ultra-modern system park**, tried-and-tested processes and an experienced team reinforces HÖHN's reputation as a top manufacturer of sophisticated precision parts.

Parts produced using the laser-welding process are **very solid and of visually high quality**. The process is absolutely **pinpoint precise, fast and reproducible**. To us, it's further proof of our capabilities.

Laser-welded parts from HÖHN:  
**from professionals for professionals.**



## ADAPTER



1.4404



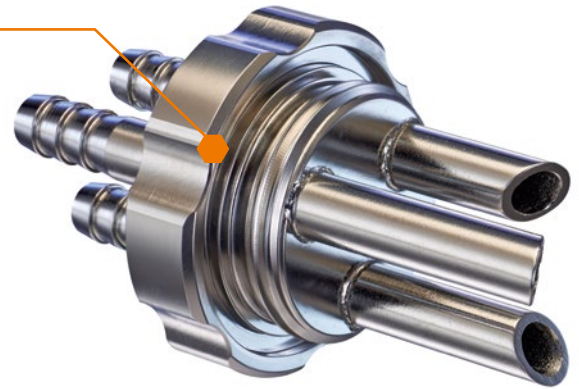
Ø 40 mm x 80 mm



Turning, 3-axis milling, assembly,  
laser-welding, surface refinement



Mixing and analysis technology for the chemical,  
pharmaceutical and water treatment sectors

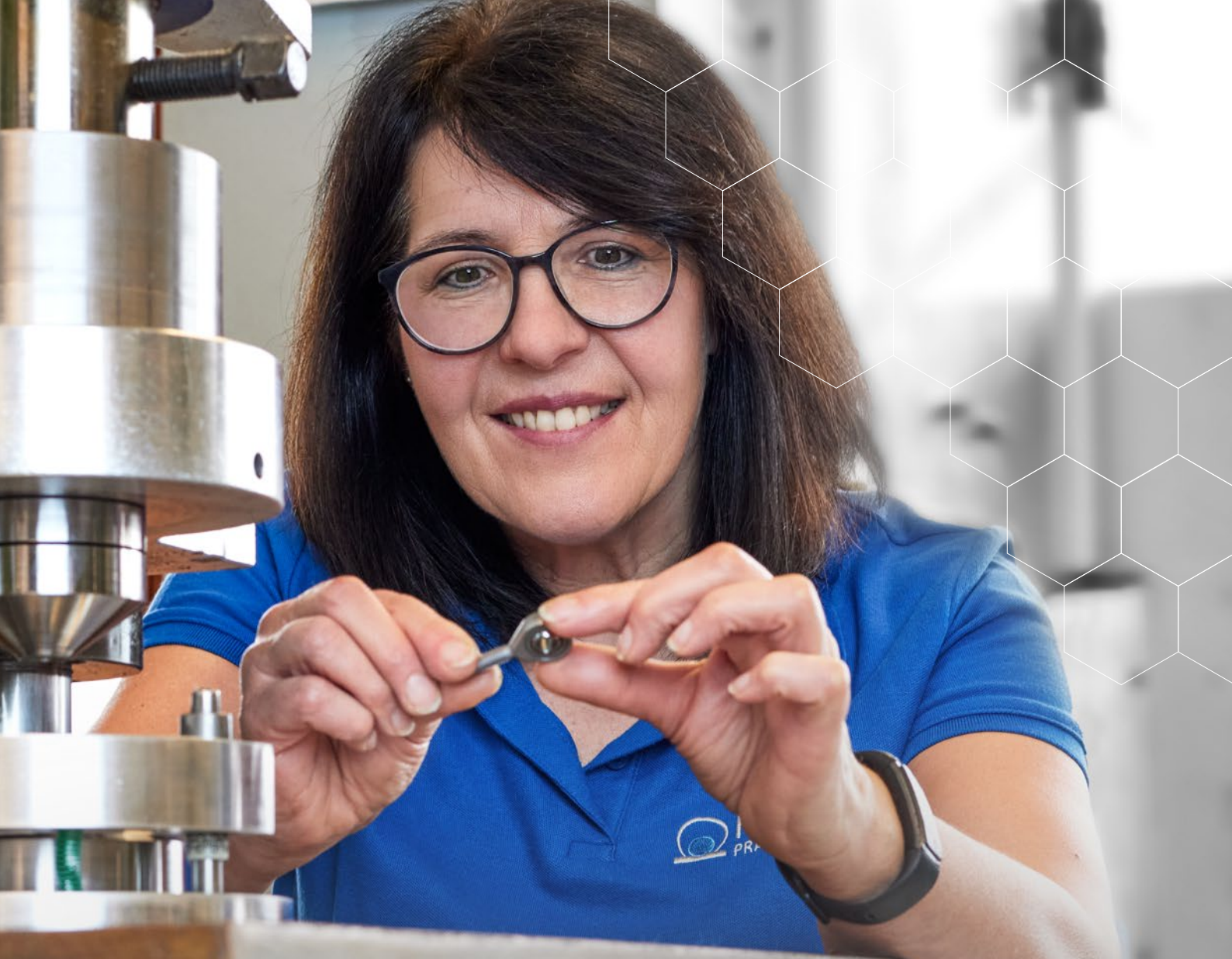


## LASER WELDING WITH HÖHN? RELEASES ENERGY.

Interested in high-quality, reproducible welding results obtained quickly and with pinpoint precision? Does the result have to be as **sturdy** as possible with the workpiece **being affected by heat as little as possible**? If so, we've got something for you!

Laser welding – **energy applied with pinpoint accuracy**. We at HÖHN are quite familiar with this. Parts processed by us using this method do more than just meet the most **stringent quality standards** and offer an enormous range of potential applications. For our customers, our **5-axis laser-welding** machine also offers enormous **cost savings** thanks to its speed and flexibility.



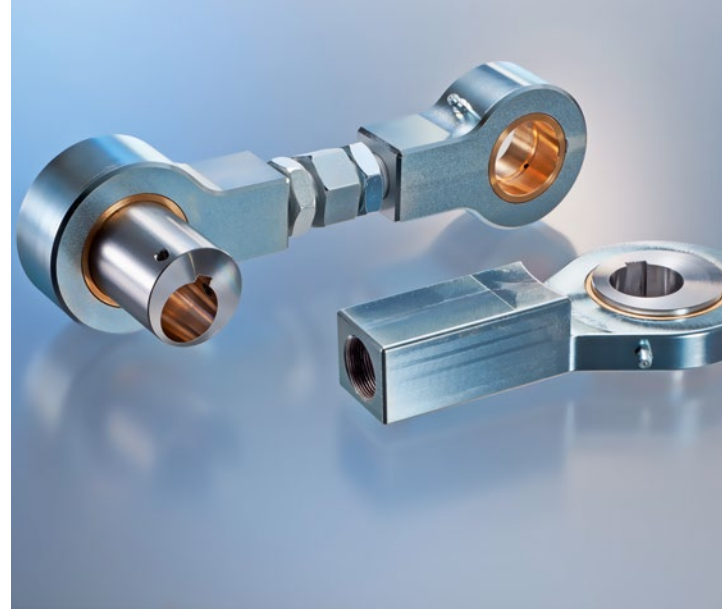


## COMPONENT ASSEMBLY. PERFECTLY JOINED.

As a HÖHN customer, you'll benefit from the **full service** you'd expect from a capable company. We do not only produce **installation-ready parts**, but can also assemble **entire components** (combination of in-house production, purchased parts and supply parts) upon request – whether in small or large quantities.

At our **component assembly department**, which includes various different eccentric and hydraulic presses, in addition to manual assembly stations, a wide variety of **different technologies** are available: pressing in, bearing tolerance setting, caulking, shaping, bending, making screw connections, welding, radial welding in the form of wobble rivets, manual precision assembly, laser inscription, engraving, stamping and lettering embossing.





# COMPONENT ASSEMBLY MADE BY HÖHN. THE SOLUTION FOR YOUR APPLICATION.

Flexibility and individuality are the key strengths of HÖHN. This applies in particular to our component assembly: We produce installation-ready parts and assemble also complete components on customer request. A combination of excellent machine and system equipment and experienced skilled personnel makes it a reality: pressing in, bearing tolerance setting, caulking, shaping, bending, making screw connections, welding, radial welding in the form of wobble rivets, manual precision assembly, laser inscription, engraving, stamping and lettering embossing.

Short & precise – our performance range:

- Robot systems for quick assembly of special parts
- 30 eccentric and hydraulic presses
- Different processing technologies (pressing in, beading, upsetting, and others)
- Part marking / branding

Components from the HÖHN company: **customized and perfectly joined.**

## ENGINE CARRIER



3.1645 / EN AW-2007



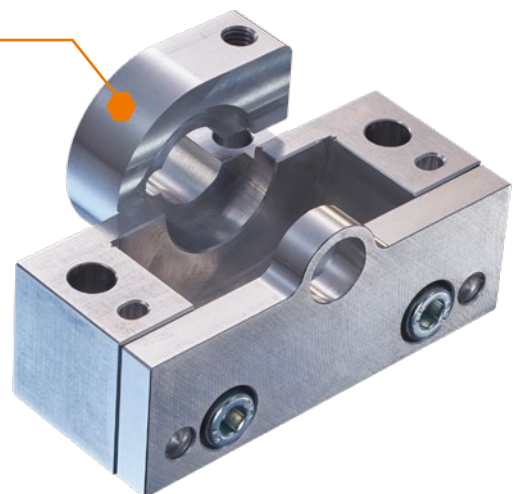
Ø 40 mm x 40 mm x 70 mm



Sawing, 5-axis milling, drilling  
deburring, component assembly



Mechanical engineering



## JIG CONSTRUCTION. IT FITS PERFECTLY.

A precision part can only ever be as good as the tools used to manufacture it. Naturally, we at HÖHN leave nothing to chance. A key component of this:

With in-house development and production of tailor-made **clamping jigs** for safe processes and economical production, as well as reliable **test jigs** for serial production, we ensure quality and efficiency from the ground up.

The fact that we rely on a **wide variety of technologies** – such as 3D printing, eroding and 5-axis simultaneous milling – demonstrates our capability.

Ultimately, the optimal precision part is always the result of a clean process. The satisfaction of our customers shows us that we're doing it just right.

## OUR LOGISTICS. IT RUNS PERFECTLY.

From acquisition to delivery, everything runs perfectly to offer our customers full performance as a manufacturer of sophisticated precision parts:

- Large raw material warehouse with large supplies of a wide variety of different materials & dimensions
- All common stainless steel types, round steel, hexagonal steels, construction steels and non-ferrous metals from Ø 12 to 300 mm
- Large pallet and small-part storage for nearly every logistics concept (Kanban, just-in-time, consignment stock and blanket orders)
- Reliable supplier network developed over many years for ensured demand fulfillment
- Continuous digital infrastructure for efficiency and consistent traceability
- Global logistics processing, including all required documents



## THE FINAL POLISH. **VERY NICE!**

Looking for perfect end results? Very well, so are we at HÖHN. To ultimately give your precision parts the perfect polish or perfect look, we are able to use a wide variety of different refinement processes, depending on the desired area of application or surface finish. This includes:

- Surface treatments (silver plating, hard chrome / chrome plating, polishing / electrolytic polishing, cadmium coating, anodising, burnishing, powder coating, painting and chemical nickel plating)
- Gearing, broaching, shaping
- Honing and grinding (inside & outside)
- Welding
- Slide grinding, glass bead blasting and shot blasting
- Cleanliness inspection / residual soiling analysis



## VISUALLY. **UNIQUE.**

Whether it's for the identification of a part (e.g. with an ID number or a code) or for identification with a logo or manufacturer's mark, we at HÖHN offer different options for part labelling and branding.

We are able to fall back on a number of different processes here, including:

- Laser inscription on flat surfaces and on the circumference
- Needle embossing
- Hard stamping
- Ink jet labelling
- Etching and much more

# CERTIFICATE



**HÖHN**  
PRÄZISIONSTEILE

## ISO 9001:2015

DEKRA Certification GmbH hereby certifies that the organization

### Martin Höhn GmbH

Siemensstraße 13, 72348 Rosenfeld, Germany

#### for the scope of certification:

Sales, development and production of spherical plain bearings, rod ends, hydraulic rod ends and customer-specific precision parts

has established and maintains a quality management system according to the above mentioned standard. The conformity was adduced with audit report no. A24061426.

Certificate registration no.:	30821725/2
Validity of previous certificate:	2024-10-05
Certificate valid from:	2024-10-09
Certificate valid to:	2027-10-05

Language translation



Dr. Rolf Krökel  
DEKRA Certification GmbH, Stuttgart, 2024-10-09



# CERTIFICATE



**HÖHN**  
PRÄZISIONSTEILE

## ISO 14001:2015

DEKRA Certification GmbH hereby certifies that the organization

### Martin Höhn GmbH

Siemensstraße 13, 72348 Rosenfeld, Germany

**for the scope of certification:**

Sales, development and production of spherical plain bearings, rod ends, hydraulic rod ends and customer-specific precision parts

has established and maintains an environmental management system according to the above mentioned standard. The conformity was adduced with audit report no. A24061426.

Certificate registration no.:	171024185
Validity of previous certificate:	---
Certificate valid from:	2024-10-09
Certificate valid to:	2027-10-08

Language translation



Dr. Rolf Krökel  
DEKRA Certification GmbH, Stuttgart, 2024-10-09



**MARTIN HÖHN GMBH**

Siemensstr. 13  
72348 Rosenfeld  
Germany

T: +49 74 28 93 84 0  
F: +49 74 28 93 84 40

[info@hoehn-praezision.de](mailto:info@hoehn-praezision.de)  
[hoehn-praezision.de](http://hoehn-praezision.de)

